



Highlights from February 2024

Greetings to the MAHB Community

*Check out the **latest developments**:*

- Why we must all work together to have a [trustworthy election](#).
- Interactive database: Systems Change Lab identifies more than 70 critical shifts that can help deliver [systemwide transformations](#).
- "Every vote matters, more this year than perhaps at any time in history," says [Jane Goodall](#).
- Also, engage in the discourse about biodiversity protection and the role of [consumption and population](#).

*February's **blogs** include:*

- A MAHB dialogue with [Angelou Ezeilo](#), lawyer, author, and leader of Ashoka International.
- A blog about deadly [greenwashing](#) and what it would take to ensure ecosocial birth and developmental equity.
- A [young writer's take](#) on how to solve overpopulation in developing countries.
- An artist's creation of [pentad calendars](#), and a blog on how [solar power](#) can save lives in India's rural healthcare.

*This month's **resources** include:*

-
- An article on how nature is ravaged by [population growth](#).
 - Richard Grossman MD writes about the other side of [reproductive coercion](#).
 - A quantitative assessment on how to reconcile [ecological balance](#) with human development (paper available).
 - An article exploring whether there can be [non-human philanthropy](#).
 - An assessment of the [minimum levels of nature](#) required to secure human well-being (paper available).
 - An article on how [AI could shape climate science](#).
 - An opinion piece on whether countries like the UK should decide between [higher net migration and further nature degradation](#), or reduced economic growth.
 - A Scientists' Warning paper on [overpopulation and Living Systems](#) (paper available).

Podcasts and videos:

- We've highlighted two TGS episodes, one with [Alexa Firmenich](#) discussing the significance of developing a connection to nature, and another with [Ashley Hodgson](#) on the structures that drive consumptive and destructive pathways and how to foster new economic paradigms.
- In a third video, [David Attenborough](#) answers questions about our planet's future by people from the worlds of sport, film, TV, music, and natural history.

Also, a reminder that the WhatsNextForEarth's art call, "[Resilience in Major Sectors](#)," is still open until **March 15, 2024**.

Don't forget to check out the latest MAHB announcements [here](#).

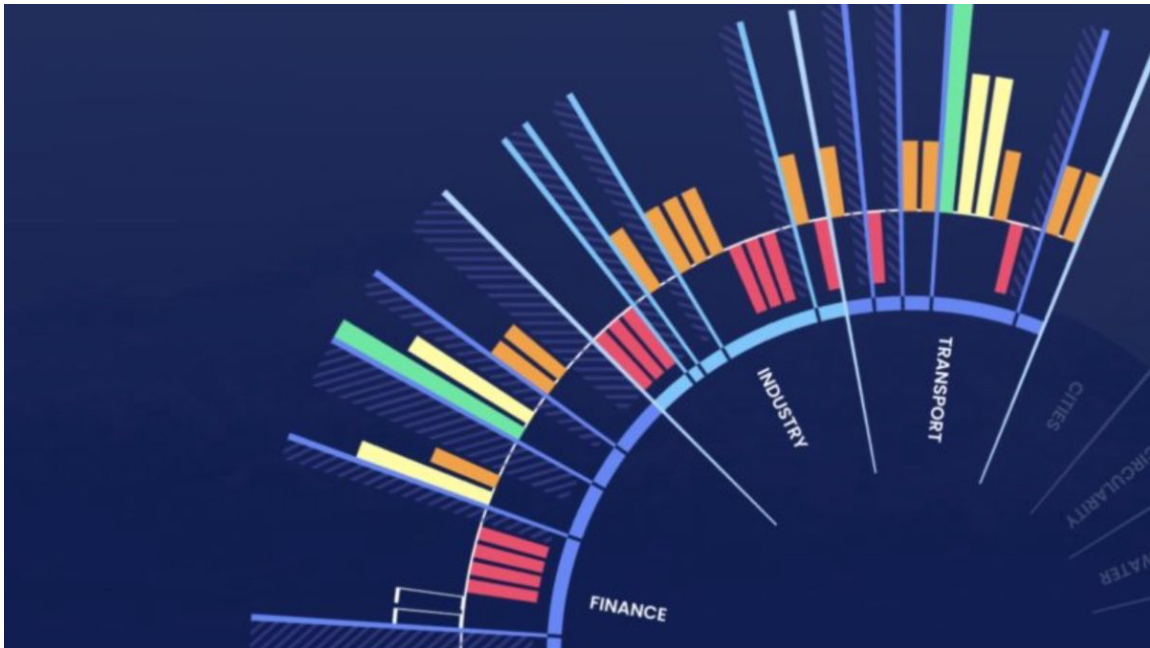
Not a member of the MAHB yet? [Join the MAHB](#) and help transform progressive civil society into an increasingly powerful force for positive change.

What's Happening



We Must All Work Together To Have a Trustworthy 2024 Election | Opinion

The Jan. 6 Capitol attack lingers and false claims by Trump persist. Despite over 60 dismissed lawsuits, a significant voter portion still believes him. Many progressives believe there were active efforts to disenfranchise qualified voters, followed by an attempted coup. Inaction now risks widespread distrust in the 2024 election, fueling conflict whatever the outcome.



Systems Change and Shifts Needed

To curb global warming, protect biodiversity, and achieve social justice, we need to transform 15 global systems. Systems Change Lab pinpoints over 70 key shifts within these systems that can trigger large-scale change. Explore these shifts and the interactive data dashboard for further insight.



Jane Goodall Says 2024 is the ‘Most Consequential Voting Year’

“Every vote matters, more this year than perhaps any time in history.”

When I caught up with Jane Goodall in 2019, she was calling on consumers and businesses to make responsible choices and [protect the natural world](#). Now she is telling people something much more simple: vote.



Biodiversity and the roles of human population and consumption: a debate

It is the rich minority's consumption that mainly affects the status of the Earth's life support system, argue David Collste and Jennifer Hinton in *Svenska Dagbladet* to an Op-ed by Malte Andersson and Frank Götmark. But will the poor majority consent to remain poor, and does it make sense to worry about consumption but not the number of consumers? ask Andersson and Götmark in reply.

Blogs for this Month



The Color of
Earth Care – A
MAHB Dialogue
with Angelou
Ezeilo, Author of
Engage,
Connect, Protect

Uniting young climate activists to collaborate and innovate on climate solutions

Governments
and Other
Institutions That
Kill Their
Innocent Citizens
Become
Illegitimate



Why Is the climate catastrophe any different, and what do we do about It?



Overpopulation in Developing Countries: What's the Best Method to Reduce Unintended Pregnancies?

How education and access to contraceptives can lift developing countries out of poverty

Pentad Perambulations: Learning the Near Particularities of a Place

What does Earth require of me? (Art Section)



Shining a Light on Healthcare Challenges in Rural India

Solar power's lifesaving potential for India's rural healthcare

[Read More](#)

Please add your thoughts to the conversations. Previous posts to the MAHB Blog can be found [here](#).

Resources



Earth's nature is being ravaged by population growth

Among the 71,000 animal species studied, [almost half](#) are decreasing, and only 3 percent are increasing. Humanity's rapid expansion leads to environmental destruction, starvation, and ravaged biodiversity. Population growth needs to be ended as soon as possible for sustainability.



The Other Side of Reproductive Coercion

Reproductive coercion comes in different forms – forced sterilization as well as forcing women to bear unwanted children. Both forms must be fought.



Reconciling a positive ecological balance with human development: A quantitative assessment

Highlights: We introduce a new concept, population biodensity, and a new indicator, the eco-balance (EB). A new criterion, based on EB, accounts for both human and environmental sustainability. We apply this criterion to all countries and the world as a whole. Many countries need to change their consumption as well as population levels to become sustainable.



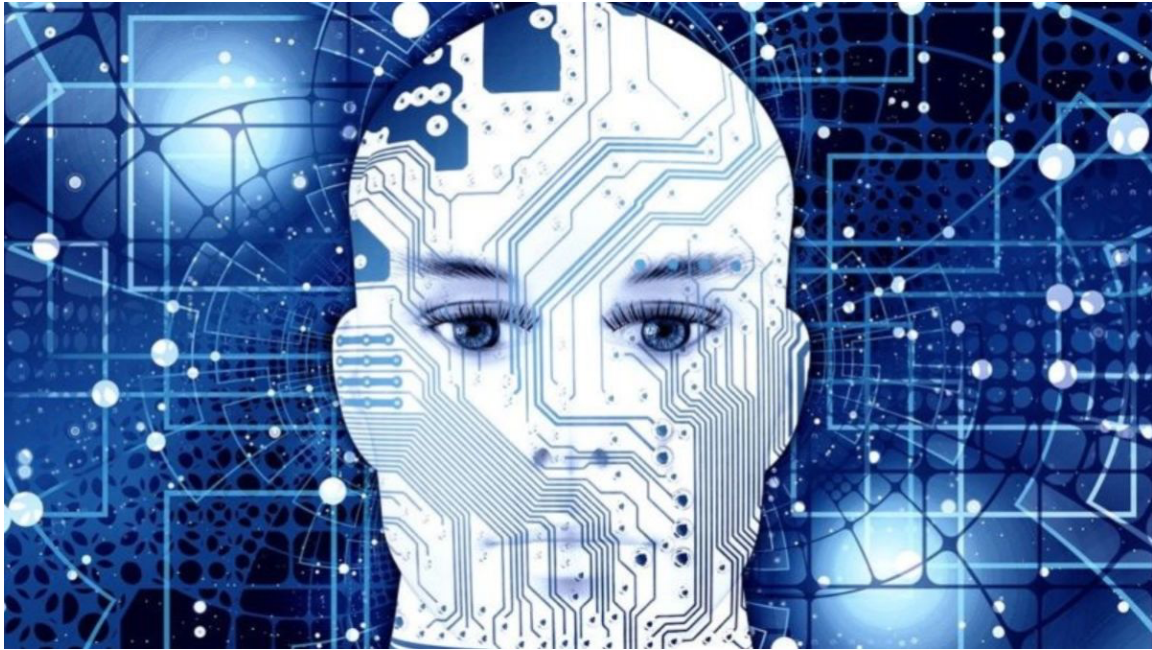
Philanthropy? Sorry – humans only

The traditional anthropocentric paradigm of philanthropy is impeding support for environmental and animal welfare causes. Is there space to defend animals and the environment within the very anthropocentric constraints of Western philanthropy?



Securing Nature's Contributions to People requires at least 20%–25% (semi-)natural habitat in human- modified landscapes

Biodiversity loss threatens crucial human well-being aspects including food production, water quality, climate regulation, and recreation. We assess the minimum level of (semi-)natural habitat in agricultural and urban areas to sustain these benefits.



How will artificial intelligence influence climate science?

The development of AI has likely reached an inflection point, with significant implications for how research addresses emerging technologies and how it will drive long-term socioeconomic development linked to climate change scenarios.



Should the UK embrace higher net migration or rethink the economy?

If the population is to grow on the scale predicted, the UK will need the infrastructure to service a much-expanded citizenry. Migration is a hot topic in the UK, as it is in Germany, France, the Netherlands, and the US. What's more, it is certain to remain a salient political issue.



Scientists' Warning on the Problem with Overpopulation and Living Systems

Life is a complex interplay of systems forming a global biosystem. The function of the biosystem and its components is the sustainable reproduction and evolution of life. To protect this biosystem and humanity, our corporate ethics must match the biosystem's requirements.

Podcasts & Videos



The Great Simplification – Alexa Firmenich: “Biodiversity, Beauty, and Being”

Nate Hagens and investor, consultant, and facilitator Alexa Firmenich discuss the significance of developing a connection to nature and understanding the crucial role of biodiversity in the climate and other natural systems.



[The Great Simplification – Ashley Hodgson: "The New Enlightenment and Behavioral Economics"](#)

Ashley Hodgson, a professor in behavioral economics, joins Nate to discuss the incentives and structures that push power towards consumptive, short-sighted, and destructive pathways. They explore ways to align our systems with values and goals conducive to supporting humans long into the future and discuss what's required to develop new economic paradigms.



Sir David Attenborough Answers Questions From Famous Fans

Sir David Attenborough has seen more of the natural world than any other. With his Netflix documentary sharing his thoughts on the future, people from the worlds of sport, film, TV, music, and natural history had the chance to ask him one burning question.

The Arts

What's Next For Earth

ART CALL

Based on the Think Resilience Course
by Post Carbon Institute

RESILIENCE IN MAJOR SECTORS

MANUFACTURING, TRANSPORTATION, & BUILDINGS

Open until March 15, 2024

[What's Next for Earth Art Call:
Resilience in Major Sectors
\(Manufacturing, Transportation, and
Building\)](#)

Here is a reminder that the [@WhatsNextForEarth](#)'s art call, Resilience in Major Sectors (Manufacturing, Transportation, and Buildings), is still **open until March 15, 2024**.

What's Next for Earth is a participative art project on Instagram inviting artists to respond to a topic reflecting poly-crises. An online exhibition will be on view on the MAHB and What's Next for Earth websites.

Copyright © 2024 Millennium Alliance for Humanity and Biosphere, All rights reserved.

You are receiving this email because you signed up on our website or with a member of our co-ordinating committee.

Contact us at:

info@mahbonline.org

Want to change how you receive these emails?

You can [update your preferences](#) or [unsubscribe from this list](#).